



Learning, Caring and Growing Together in Faith.

St Andrew's C of E Infant School

## Living Out Our Christian Vision Dragonflies Class

*Here's how we flourish*

Summer 1



In DT the children had lots of fun using their sewing skills to design and create puppets.



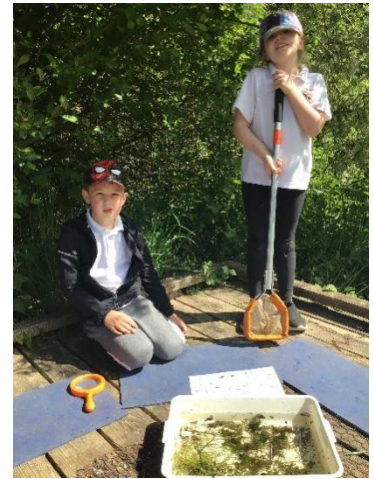
**'God is my strength, in whom I trust.' Psalm 18**





Learning, Caring and Growing Together in Faith.

### St Andrew's C of E Infant School



We had a fabulous time at Brockholes Nature Reserve ponding dipping for minibeasts and using a compass and map to locate landmarks.

**'God is my strength, in whom I trust.' Psalm 18**





Learning, Caring and Growing Together in Faith.

## St Andrew's C of E Infant School



Harold the Giraffe visited Dragonflies to teach us all about how to look after our body and our feelings.

**'God is my strength, in whom I trust.' Psalm 18**



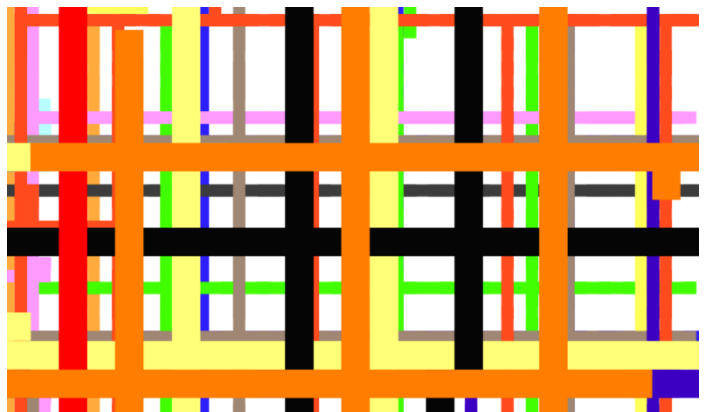
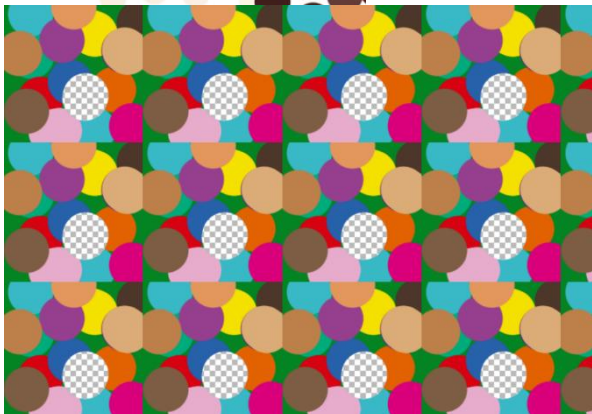
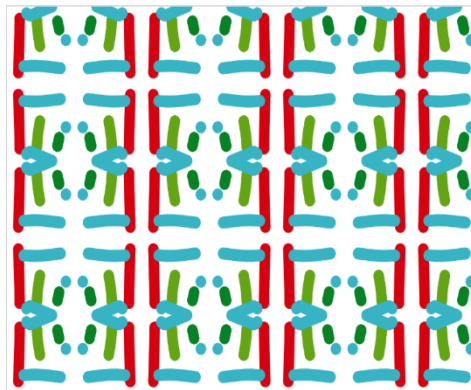


Learning, Caring and Growing Together in Faith.

### St Andrew's C of E Infant School



In Computing we have explored the work of different artists with varying styles such as pointillism, surrealism, patterns and lines. The children then created their own artwork.



'God is my strength, in whom I trust.' Psalm 18





Learning, Caring and Growing Together in Faith.

### St Andrew's C of E Infant School

In PE we have been working hard in our striking and fielding unit and enjoyed talking part in an afternoon of cricket with South Ribble.



'God is my strength, in whom I trust.' Psalm 18





Learning, Caring and Growing Together in Faith.

### St Andrew's C of E Infant School



We had a visit from Guide Dogs, learning how those with visual impairment can still be independent with the help of their guide dog. We also wore odd shoes to raise awareness.



We enjoyed our 'Time to Talk' in the sunshine.

Fairies and Elves visited our school!

They wanted to sleep over but needed our help so we wrote them a bed time story to help them get to sleep.



'God is my strength, in whom I trust.' Psalm 18